



Gokhale Education Society's

COLLEGE OF EDUCATION AND RESEARCH

Parel, Mumbai – 400 012.

Permanently affiliated to University of Mumbai, NCTE Recognised, UGC 2f 12B,
ISO 9001:2015 Certified, NAAC accredited A grade in 3rd Cycle

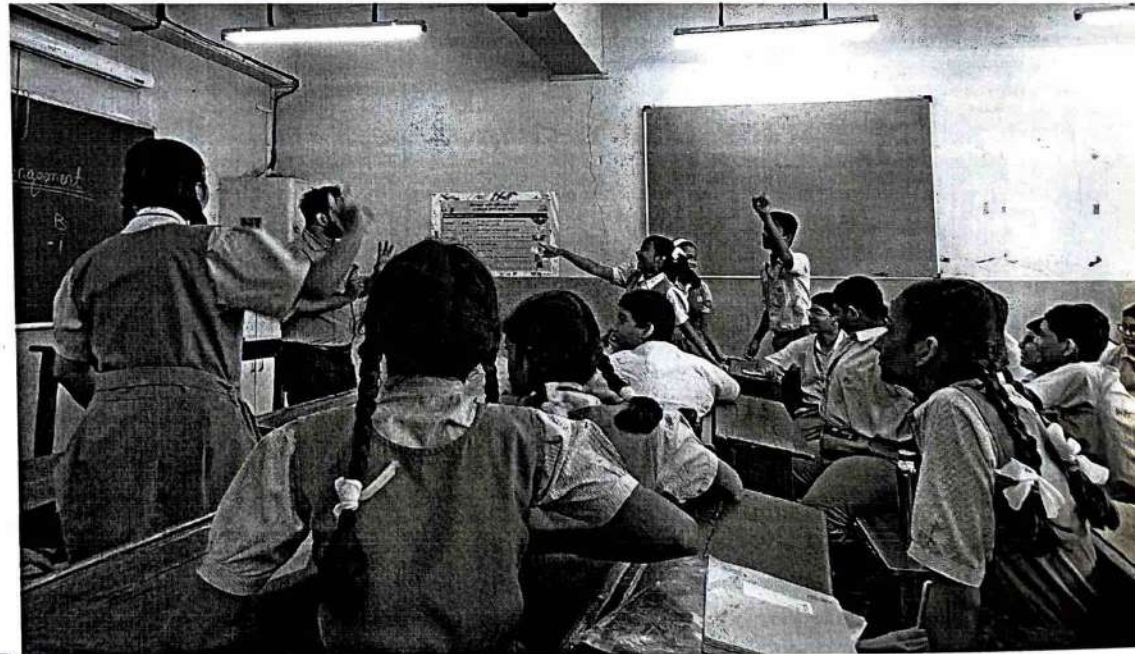
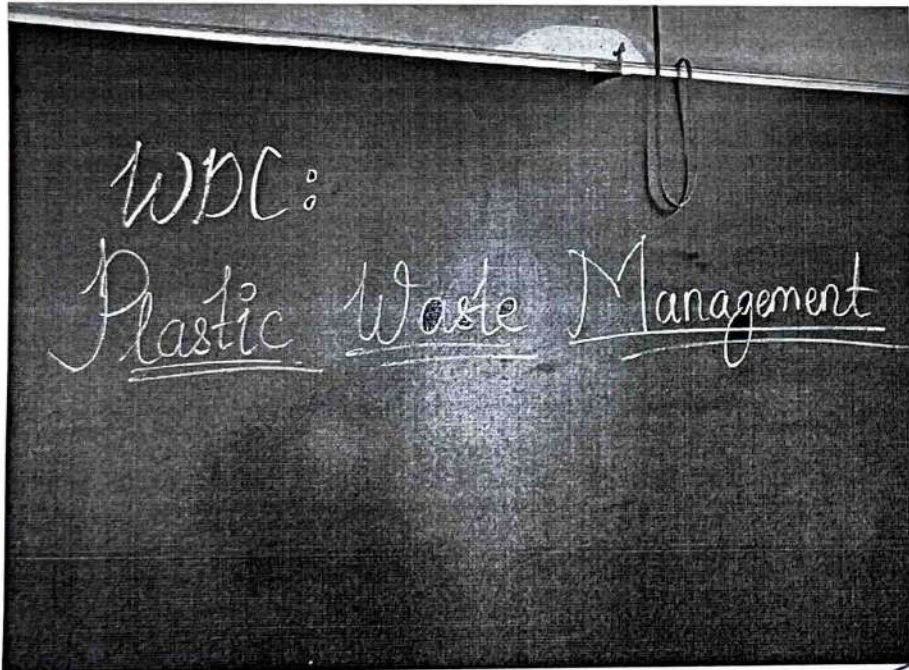


DOCUMENT UPLOAD

**INSTITUTIONAL VALUES AND SOCIAL
RESPONSIBILITIES 7.1.5**

PLASTIC WASTE MANAGEMENT DEBATE

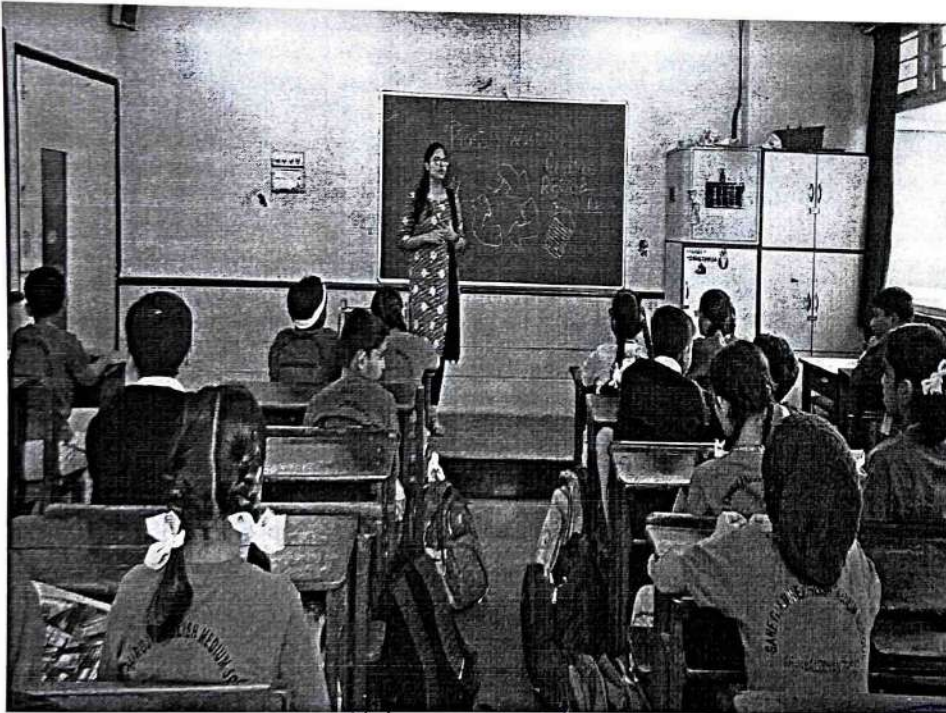
- Conducted on 17th January 2023 – 8th D
- Topic – Plastic is necessary for mankind.
- Class was divided into 2 groups.
- Each group had 2 minutes to speak in rounds.



Principal
Gokhale Education Society's
College of Education & Research
Parel, Mumbai - 400 012.



- 3R's – REDUCE, REUSE, RECYCLE
- Plastic – Useful or Harmful?
- Slogan – 'PLASTIC IS LIKE A KNIFE, WHICH HARMS OUR LIFE'



Kone
Principal
Gokhalé Education Society's
College of Education & Research
Parel, Mumbai - 400 012.



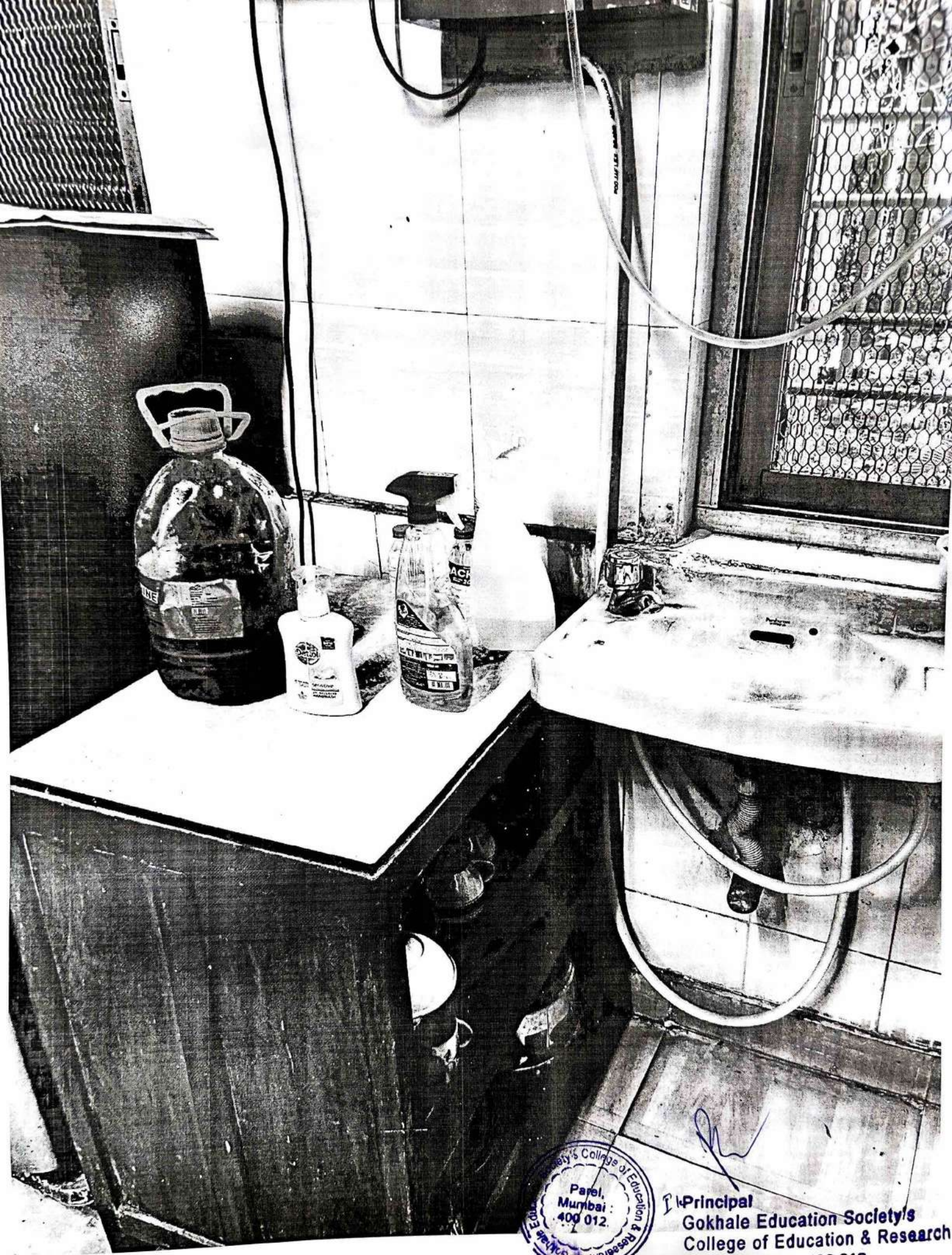
 **LADIES
TOILET**

**GIRLS REST
ROOM**

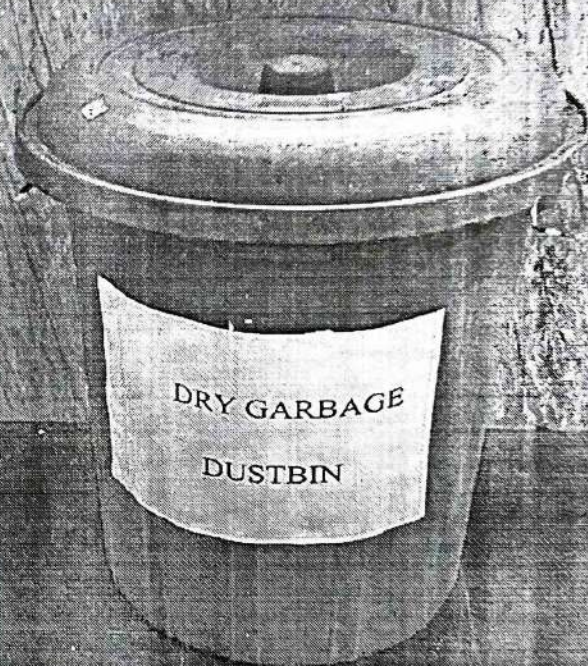
Common Room (Girls)


College of Education
Parel,
Mumbai

me
Principal
Gokhale Education Society



[Signature]
Principal
Gokhale Education Society's
College of Education & Research
Parel, Mumbai - 400 012..



DRY GARBAGE
DUSTBIN

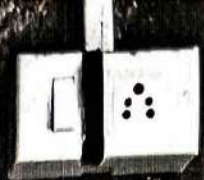
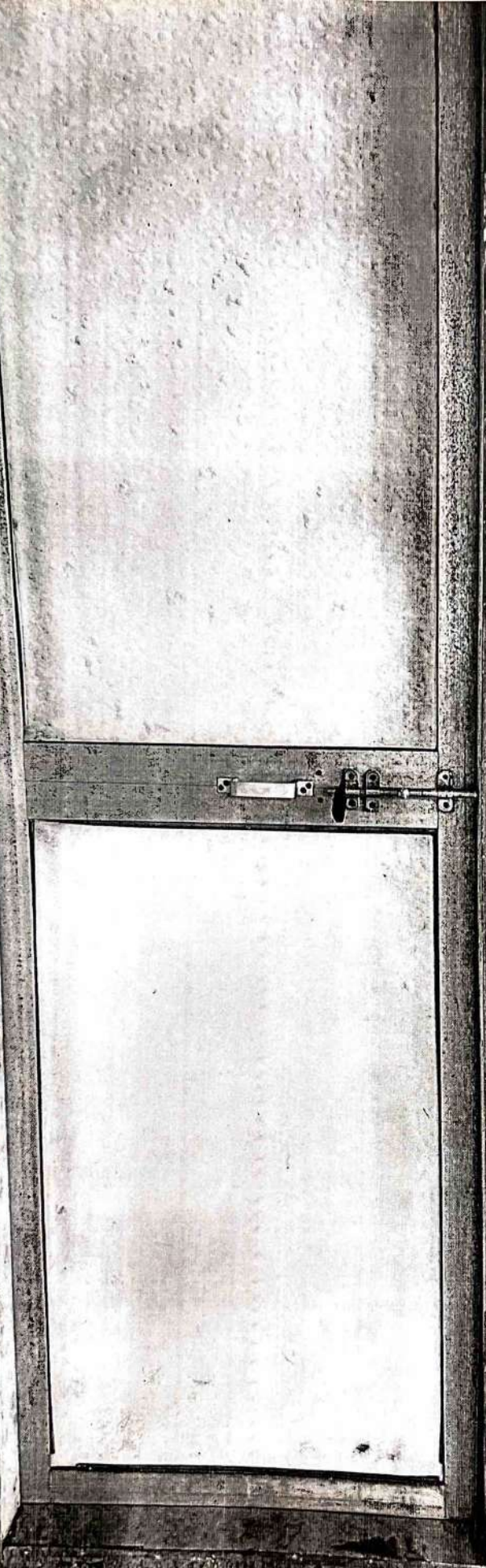


Principal
Principal
Gokhale Education Society's
College of Education & Research
Parel, Mumbai - 400 012.




Principal
Gokhale Education Society's
College of Education & Research
Parel, Mumbai - 400 012.

Toilet (Female Staff)





Wednesday, 19 July, 2023 11:29:45

computer room

#Gokhale education society's college of education and research
Index number: 1221



Wednesday, 19 July, 2023 11:31:11

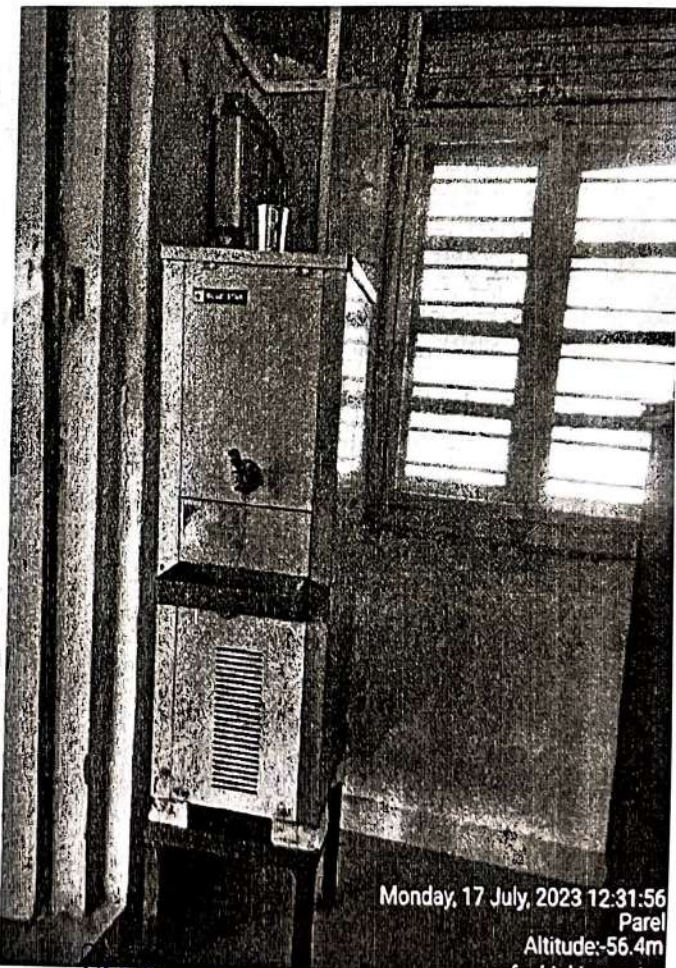
language room

#Gokhale education society's college of education and research
Index number: 1222



Wednesday, 19 July, 2023 11:37:59

Administrative Office B. Ed College



Monday, 17 July, 2023 12:31:56

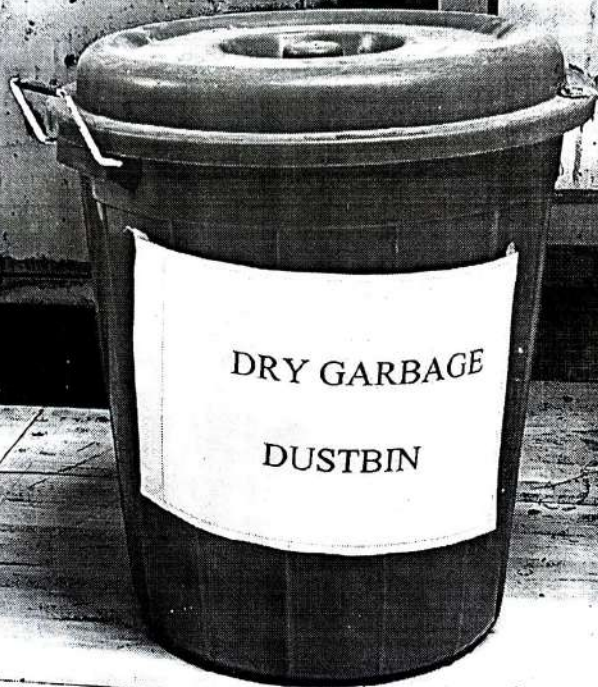
Parel

Altitude:-56.4m

safe drinking water



D. K. Principal
Gokhale Education Society's
College of Education & Research
Parel, Mumbai - 400 012




Principal
Gokhale Education Society's
College of Education & Research
Parel, Mumbai - 400 012.